

MINI Hand-held Laser Marker - Chargeable —MY-M20F-MHB



Advantages

- 1) Machine has net weight 8.4 kg, easy to carry.
- 2) Battery can support the machine working OFFLINE everywhere, 4 hours of charging, 7 hours of working.
- 3) Suitable for any big, heavy, fixed object or any high-precision equipment which is not suitable for moving.
- 4) Adopt high-speed small scanning galvanometer, can do accurate positioning.
- 5) Smart touch screen, support various languages. Easy operating system, two steps start marking

Long and safe operation

1. One charge can be used continuously for 7 hours
2. Self-developed software system, stable work without errors



Easy to operate

1. Smart touch screen operating system
2. Support various languages, two steps start marking



Work efficiently

1. Marking speed up to 7000mm/s
2. Self-developed intelligent chip, powerful performance, can quickly process huge data and complex patterns

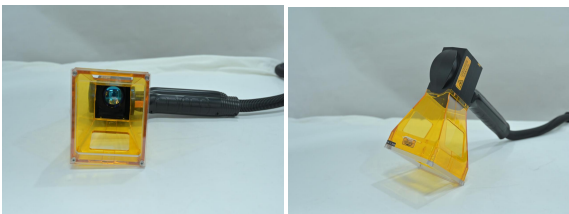


Easy to carry

1. Weight only 8.4 kg, light and easy to carry
2. Marking can be done anytime and anywhere, easy to adjust the marking position



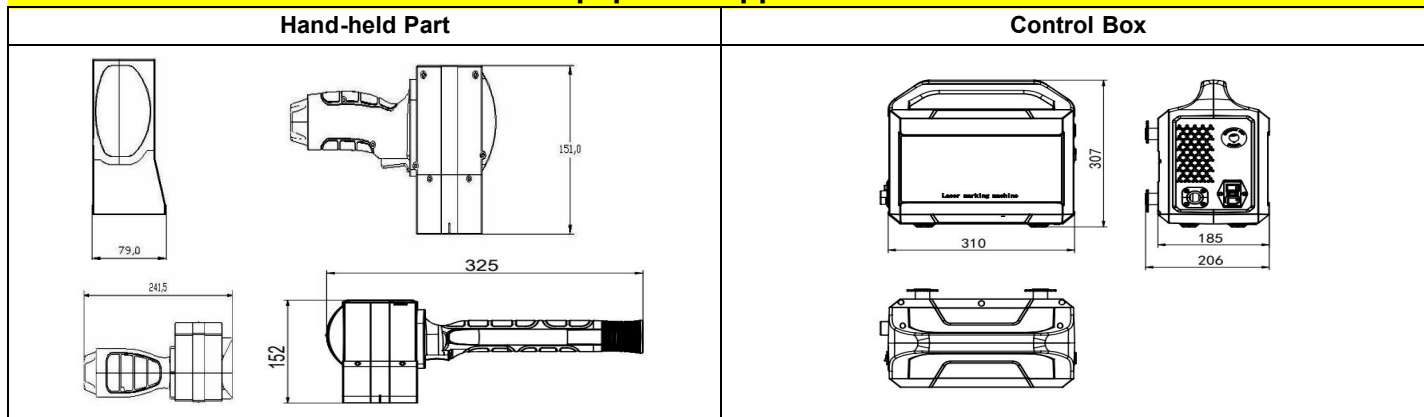
Hand-held Part



Battery



Equipment Appearance



Parameters

Model	MY-M20F-MHB / MY-M30F-MHB	
Machine Material	Engineering Plastics	
Laser Type	JPT / MAX Fiber Laser	
Output Power	≥18W / ≥26W / 50W	
Laser Wavelength	1064nm	
Printing Method	High precision double-dimensional scanning method	
Marking Speed	≤7000mm/s	
Master Control	Highly integrated motherboard with embedded 7" screen	
Pulse Energy	0.75mJ	
Frequency Range	30-60 KHZ	
Operating System	Linux	
Cooling System	Air-cooled at room temperature	
Marking Line Type	Dot matrix, vector integrated machine (can play both dot matrix and vector)	
Reflector Size	Standard: 8.5mm	
Marking range	50mm×50mm (standard)	100mm×100mm (optional)
Positioning Method	Red light positioning	
Number of lines of marking characters	Any line in the marking range	
Printing Speed	650 Characters / Sec (specific speed is related to the product material and print content)	
Font	Simplified Chinese, Traditional Chinese, English, Korean, Russian, Arabic numerals and other language	
File Format	BMP/DXF/HPGL/JPEG/PLT	
Bar code / 2D code	CODE39, CODE128, CODE126, EAN13, PDF417, 01CODE, QR, AZTECCODE, DM, GS1DM, DOTCODE, HANXINCODE, etc.	
Battery Capacity	12Ah	
Ambient temperature 22°C	≤7 hours	
Full Charge Time	4 hours	
Net Weight	8.4KG (Without battery)	9.1KG (With battery)
Handheld Size	241.5mmX79mmX151mm	325mmX79mmX151mm
Control Box Size	310mmX260mmX307mm	310mmX269mmX307mm
Pollution Class	2	
Overvoltage Class	II	
Work Temperature	0-40°C	
Humidity	30 -85 RH (no condensation)	

Warranty

The machine has a warranty period of 15 months since the production date.

Applicable materials

Applicable industry



Hardware Instrument



Medical Industry



Cosmetic Product



Daily Product



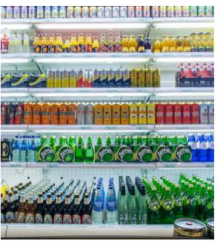
Home Appliances



Food Packaging



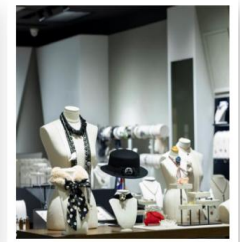
Electronic Accessories



Dairy Product



Tobacco Industry



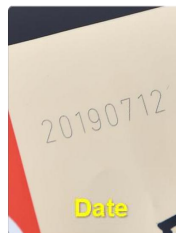
Jewelry



Text



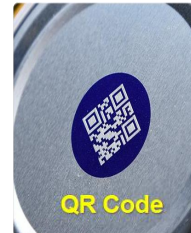
Number



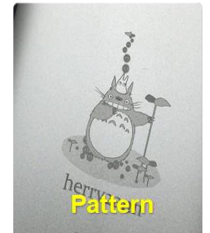
Date



Bar Code



QR Code



Pattern

Sample Gallery

